

Patch panel KOMPAKT HD, Category 5E, 24xRJ45/s, 0,5U

P/N: 606058

1
Gigabit

Cat. 5E

100
MHz

HD
HIGH DENSITY

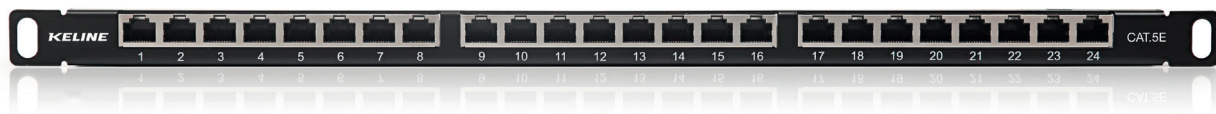


Features

- reaches a density of up to 48 ports in 1U
- 110 / LSA termination blocks
- fast and easy installation using 110 or Krone® insertion tool
- enables transmission of all high-speed protocols including 1000BASE-T
- guarantees a bandwidth of 250 MHz
- cable ties for gripping (24 pcs)
- perfectly shielded against electromagnetic interference
- designed for 19" cabinets
- integrated cable management

Application

- primary (Campus), secondary (Riser), tertiary (Horizontal)
- IEEE 802.3: 10BASE-T; 100BASE-T; 1000BASE-T
- IEEE 802.5: 16 MB; ISDN; FDDI; ATM



Construction

Height	0,5U
Width	19" (482,6 mm)
Depth (including cable management)	114 mm
Material	steel
Color	black RAL 9005
Surface	structured, matt

Mechanical properties

Suitable for cables with solid wires	from 0,51 to 0,64 mm (od AWG 24 do AWG 22)
Insertion / extraction cycles RJ45	min. 750
IDC retermination	min. 20
Contact pin material	nickel plated phosphor-bronze alloy
IDC contact material	plated phosphor/bronze alloy

Electrical properties

Current rating	1,5A max
Insulation resistance	1000 M Ω max
Dielectric strenght	750V AC, 60Hz 1min
Contact resistance	100 m Ω max