

STP patch cable, Category 6, LSOH

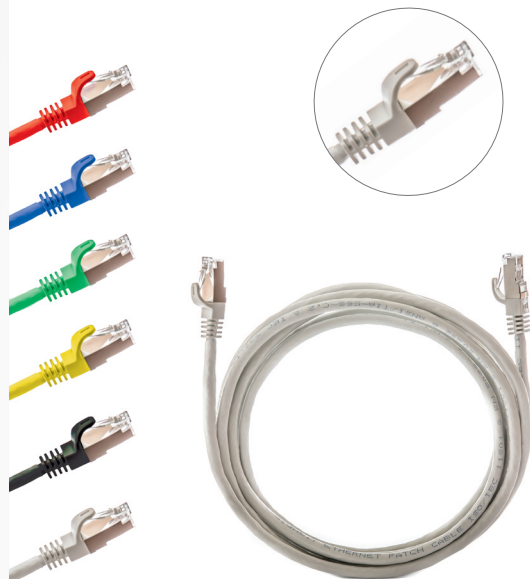
P/N: PC-C6-S-005	length 0.5 m	P/N: PC-C6-S-030	length 3 m	P/N: PC-C6-S-150	length 15 m
P/N: PC-C6-S-010	length 1 m	P/N: PC-C6-S-050	length 5 m	P/N: PC-C6-S-200	length 20 m
P/N: PC-C6-S-015	length 1.5 m	P/N: PC-C6-S-075	length 7.5 m		
P/N: PC-C6-S-020	length 2 m	P/N: PC-C6-S-100	length 10 m		

1
Gigabit

Cat.6

250
MHz

LSOH



features

- individually shielded pairs with stranded wires, halogen-free sheath
- connector RJ45 is compliant with IEC 60603-7 standard by its dimensions and transmission features
- enables transmission of all high-speed protocols up to 1000BASE-T
- guarantees a bandwidth of 250 MHz
- shielded against electromagnetic interference
- complies with the requirements for fire prevention arrangements in buildings with higher concentration of people
- available in red, blue, green, yellow, black and gray color

application

- primary (Campus), secondary (Riser), tertiary (Horizontal)
- IEEE 802.3: 10Base-T; 100Base-T; 1000Base-T
- IEEE 802.5 16 MB; ISDN; FDDI; ATM

construction

Conductor	stranded bare copper wire, AWG 27/7	
Sheath	low smoke, halogen-free (LSOH)	
Contact pin material	phosphor-bronze alloy coated with 50 μ of gold	
Boots material	polycarbonate	
Outer cable diameter	6,2 mm	
Color (standard)	cable	gray RAL7035
	boots	gray RAL7035

mechanical properties

Insertion / extraction cycles	min. 750	
Temperature range	operation	-25 °C to +60 °C
	installation	-25 °C to +60 °C
Min. bending radius	25 mm	

electrical properties at 20°C

Voltage rating	-	125 V AC
Current rating	-	1 A
Contact resistance	100 mA (DC or 1000Hz)	50 mΩ max.
Insulation resistance	100 V DC	100 MΩ min.