

# Patch panel, Category 6<sub>A</sub> , 24xRJ45/s

P/N: KEP-C6A-S-10G

**10**  
Gigabit

**Cat.6<sub>A</sub>**  
interoperable

**500**  
MHz

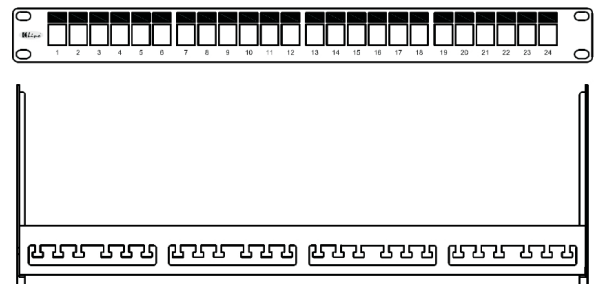
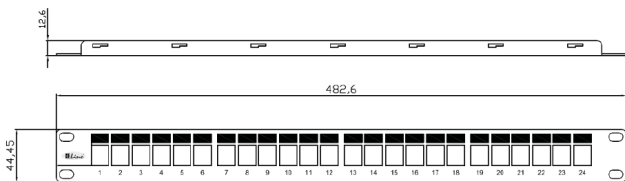
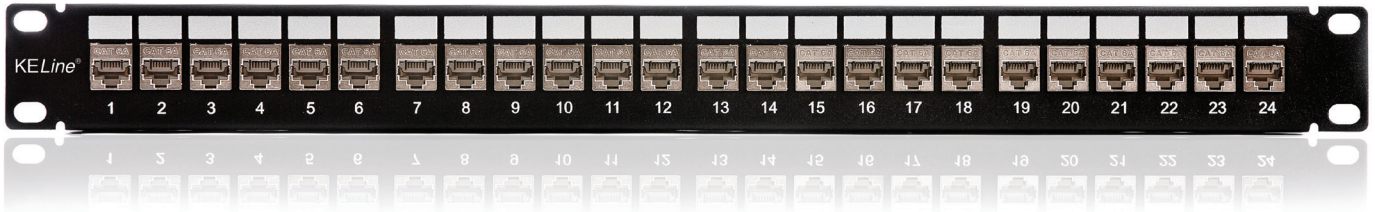


### features

- 24 keystone jacks included (KEJ-C6A-S-10G)
- designed for 19" cabinets
- integrated cable management
- cable ties for gripping (24 pcs)
- set of M6 screws and captive nuts (4 pcs)
- grounding screw and washer (1 pc)

### application

- primary (Campus), secondary (Riser), tertiary (Horizontal)
- IEEE 802.3: 10Base-T; 100Base-T; 1000Base-T; 10GBase-T
- IEEE 802.5 16 MB; ISDN; FDDI; ATM
- high bandwidth digital applications with low BER
- multimedia transmissions like digital and analog video and voice



### construction

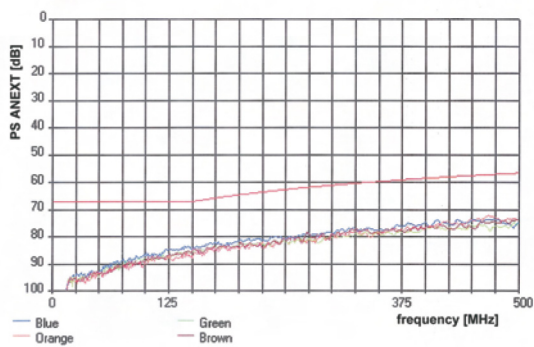
Height	1U (44,5 mm)	
Width	19" (482,6 mm)	
Depth (including cable management)	152 mm	
Material	front face	nickel-plated steel, corrosion-resistant
	cable management	nickel-plated steel, corrosion-resistant
Color	black	
Surface	smooth, shiny	

### keystone jack KEJ-C6A-S-10G mechanical properties

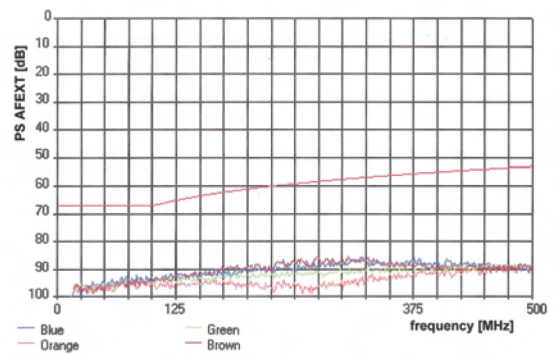
Note: for detailed information see datasheet for keystone jack KEJ-C6A-S-10G

Suitable for installing on	cables with solid wires	from 0,51 to 0,64 mm (AWG 24 - AWG 22)
	cables with stranded wires	from AWG 26/7 to AWG 24/7
Contact pin material	phosphor-bronze alloy coated with 50 μ of gold	
Insertion / extraction cycles	min. 750	
Temperature range	installation	-40°C to +70°C
	operation	-10°C to +60°C
IDC retermination	min.20	

typical PS ANEXT



typical PS AFEXT



This product is certified on a component level by FORCE Technology international independent laboratories according to ISO/IEC 11801-1:2017 (Ed. 1.0) / ISO/IEC 11801-2:2017 (Ed. 1.0), IEC 60603-7-51:2010, EN 50173-1:2018 / EN 50173-2:2018, TIA-568.2-D:2018, IEC 60512-99-002:2019.

Mass production of this product is carried out under the supervision of FORCE Technology laboratories.