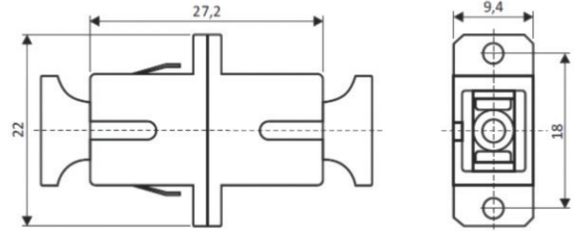
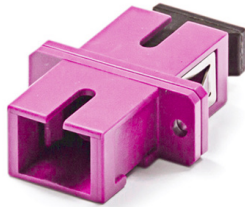


# Multimode adapter SC-SC

P/N: KE-SC-MM-EV

**OM4**  
multimode



## mechanical properties

Housing material	plastic
Alignment sleeve	phosphor bronze
Insertion loss	< 0,2 dB
Durability	500
Operating temperature	-40°C to +80°C

## related products

P/N: <b>RAB-FO-X37-SL</b>	Sliding patch panel for 24 x SC-SC, LC-LC Duplex or E2000-E2000 adapters
P/N: <b>PIG05-SC-020</b>	Pigtail SC
P/N: <b>RAB-FO-X04</b>	Splice cassette for 16 splices
P/N: <b>F11002</b>	Splice protection