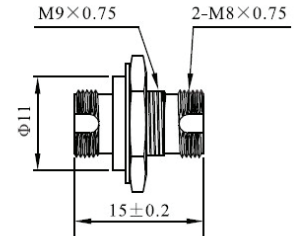
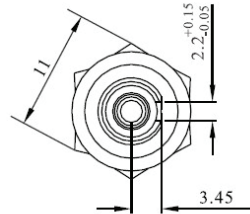


Singlemode adapter FC-FC

P/N: KE-FC-SM

OS2
singlemode



mechanical properties

Housing material	plastic
Alignment sleeve	ceramic (zirconia)
Insertion loss	< 0,2 dB
Durability	500
Operating temperature	-40°C to +80°C

related products

P/N: RAB-FO-X05-SL	Sliding patch panel for 24 x ST-ST or FC-FC adapters
P/N: RAB-FO-X04	Splice cassette for 16 splices
P/N: F11002	Splice protection