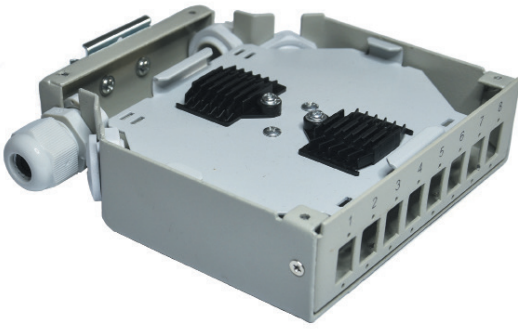


# Distribution box for DIN rail

## for 8x SC-SC, LC-LC Duplex or LSH-LSH adapters, empty

P/N: **HN-DIN8-SC** for 8 adapters



### features

- suitable for 8x SC-SC, LC-LC Duplex or LSH-LSH adapters
- designed for DIN rails in residential and industrial electric distribution (home networking and industrial Ethernet)
- cable clamp PG11 (2 pcs)
- blind (2 pcs)
- including splice holders

### construction

Height	130mm
Width	35mm
Depth	125mm
Material	steel
Colour	gray
Surface	structured, matt