

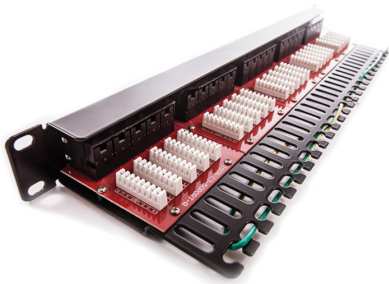
19" Patch panel 50xRJ45/u, Cat.3

P/N: 509020

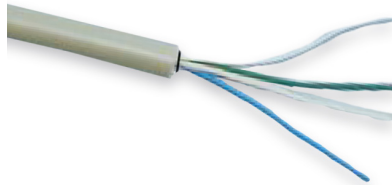
Cat.3

16
MHz

1.

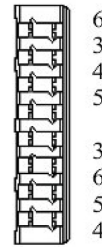


2.



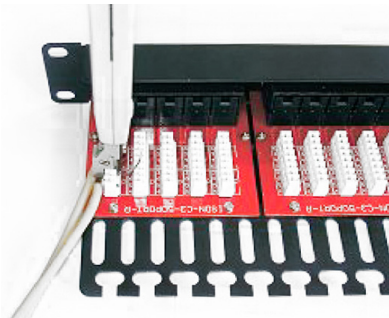
3.

IDC (KRONE)



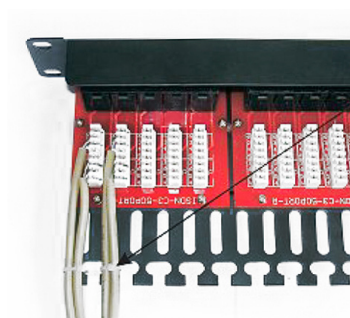
Strip approximately 75 mm of the cable jacket.

4.



Use the LSA impact tool to punch and connect the wires on the IDC.

5.



Use the cable tie to manage these cables, then complete the installation.