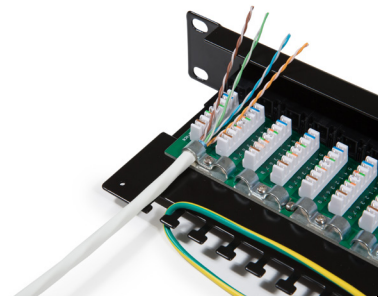
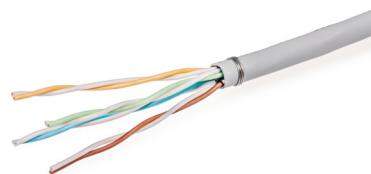
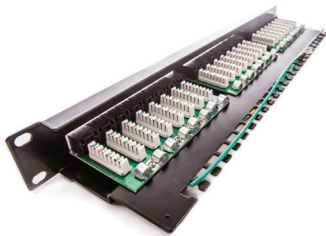


# Patch panel KOMPAKT, Category 5E, 24xRJ45/s

P/N: 606029

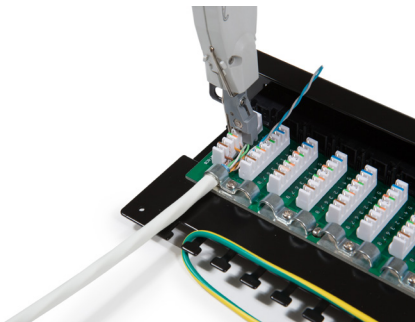
1  
Gigabit

Cat.5E

100  
MHz

Strip approximately 75 mm from the cable jacket, fold back the foil or braid shield and prepare each pair.

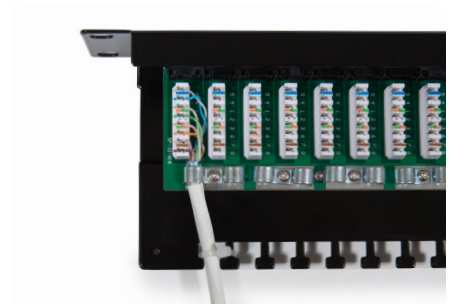
Follow the direction on the colour-coding sticker for T568A or T568B wiring and set pairs into proper position.



Punch down wires with LSA-tool.



Fasten the screws through metal case to hold tightly down for two cable jackets in the same time.



Fasten cable ties for additional strain relief.