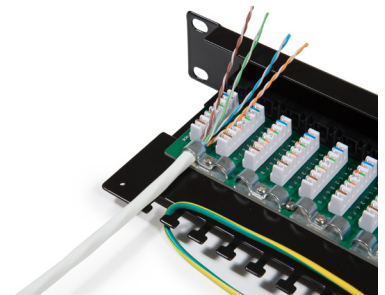
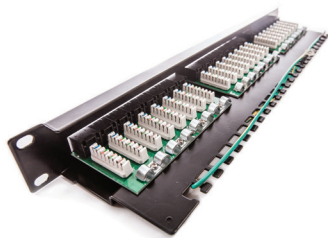


Patch panel KOMPAKT, Category 5E, 24xRJ45/u

P/N: 606030

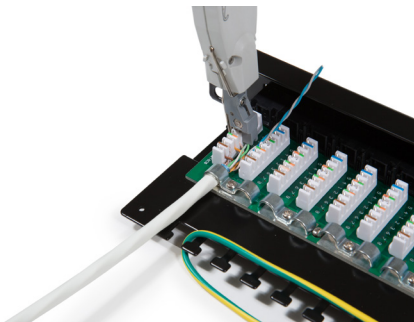
1
Gigabit

Cat.5E

100
MHz

Strip approximately 75 mm of the cable jacket and separate wires into 4 pairs.

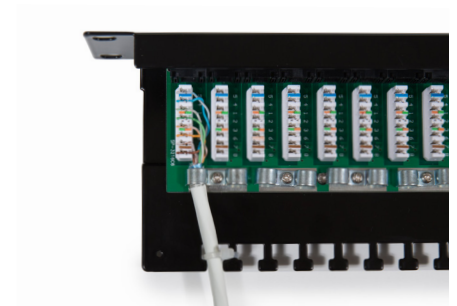
Follow the IDC colour-code for T568A or T568B wiring and set pairs into proper position.



Punch down wires with LSA-tool.



Fasten the screws through metal case to hold tightly down for two cable jackets at the same time.



Use the cable tie to manage these cables, then complete the installation.