

19" cabinet for outdoor / industrial areas with IP55 protection

P/N: RIO-xx-C45

P/N: RIO-xx-C60

xx – height in RU (7, 9, 12, 16, 20 and 24U)

Features

- designed for protected outdoor and industrial areas
- designed for outdoor use
- in case of cabinets constructed from stainless steel material AISI 304 (1.4301) - 50 years warranty covering structural damage caused by corrosion
- dust and water resistant
- welded construction with IP55 protection
- reinforced steel front door with 3-point bar-locking and half-cylinder lock
- double roof, inner roof prepared for mounting of double fan unit with thermostat (fan unit has to be ordered separately)
- vertical rails are continuously adjustable (back rails can be ordered as well)
- bottom cable entrance through PG clamps 1xPG48, 2xPG21+ 3 blind holes of Ø 20 mm
- all removable parts are connected with earthing cables



Technical specification

Protection	IP55
Maximum load	100 kg
Width	600 mm
Color	gray RAL7035
Surface	structured

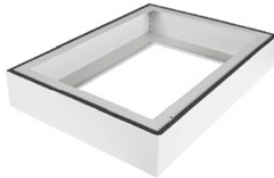
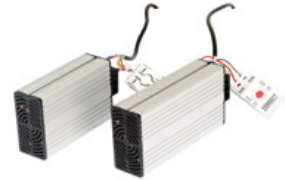


Fan unit with thermostat for top cover of outdoor / industrial cabinets

P/N: RIO-CH-02V

DIN rail heater for outdoor / industrial cabinets, 50/60Hz, 230V, 35 mm, 50W

P/N: RIO-SH-50W



Base for outdoor / industrial cabinets

P/N: RIO-PO-C64

600 x 450 mm

P/N: RIO-PO-C66

600 x 600 mm

Rear vertical rails for 19" outdoor / industrial cabinet

P/N: RIO-VL-09U

height 9U

P/N: RIO-VL-12U

height 12U

P/N: RIO-VL-16U

height 16U

P/N: RIO-VL-20U

height 20U

